

bios

The Bridge

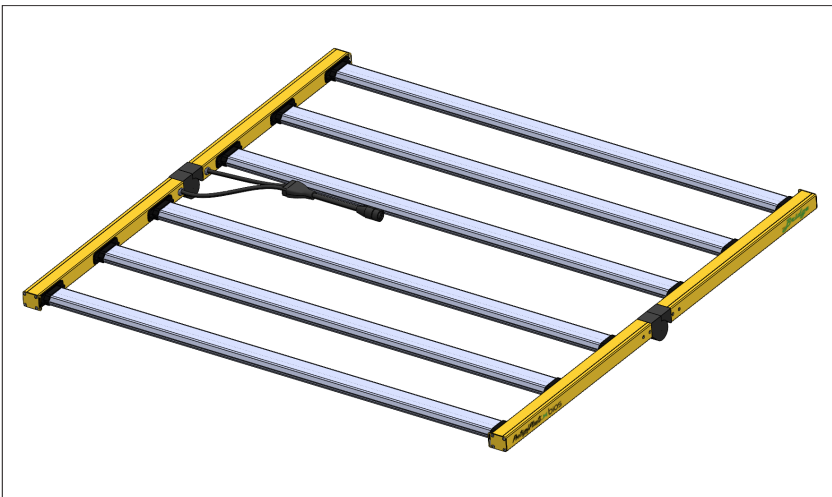
The Bridge Installation Manual

Fixture Assembly + Materials

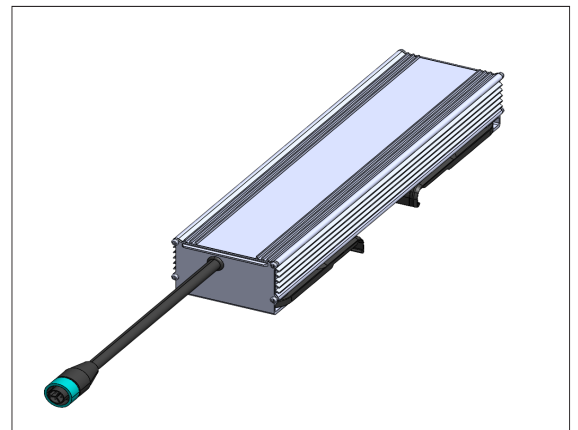
What's In The Box:

The following items and quantities should arrive with your purchase of The Bridge LED grow light. If you are missing items in your fixture box, please contact help@bioslighting.com

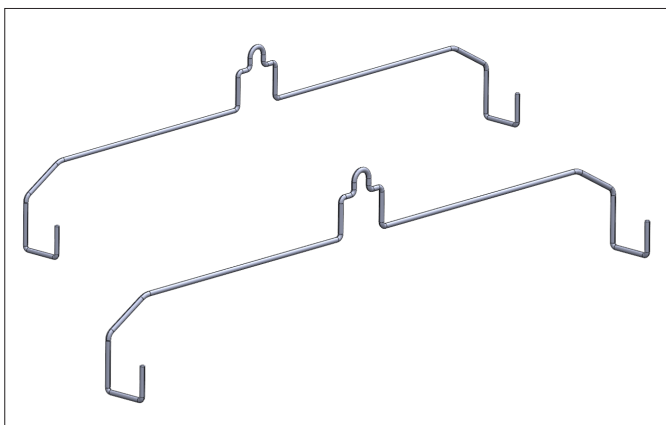
(1) The Bridge Fixture



(1) BIOS Power Supply Unit (PSU)



(2) Unistrut Hanger



Not pictured:

- (1) NEMA 6-15P AC Cable - 2.5m - M19 LLT
- (1) Dimmer Pigtail - 2.5m - M12 LLT
- (1) 120V to 240V Adapter

bios

The Bridge

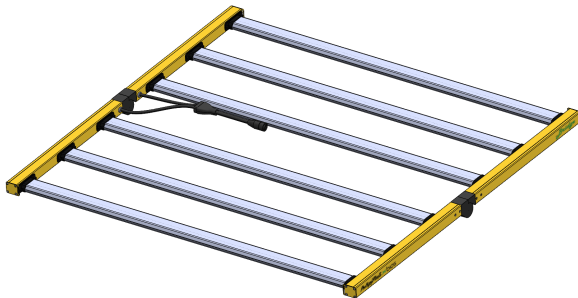
The Bridge Installation Manual

Light Fixture Assembly

The following diagrams provide step-by-step instruction to assemble The Bridge fixture and PSU. Best practice is to assemble the unit on a flat surface.

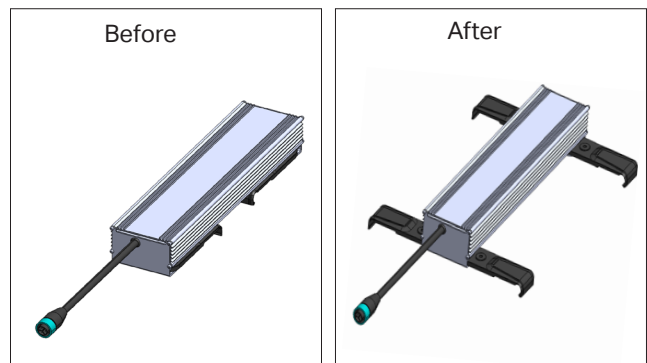
Step 1:

Remove The Bridge fixture and BIOS Power Supply (PSU) from the boxes. Carefully unfold The Bridge fixture and lie it flat, LEDs facing down.



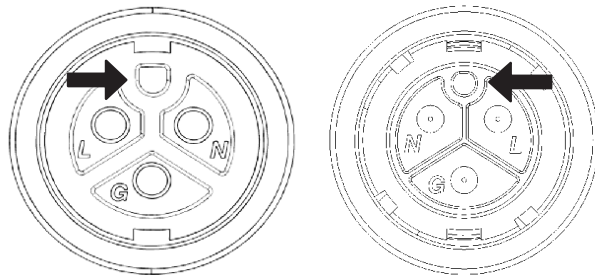
Step 2:

Unfold the (4) clamps on the bottom of your BIOS Power Supply (PSU.)



Step 3:

Align the DC Cable input on the BIOS Power Supply (PSU) with the DC Cable attached to The Bridge fixture. Connect the fixture cable to the DC Cable input (larger hole). Be sure to align the connection points indicated with the arrows below.



Reference the arrows on the side of each cable to ensure the cables are aligned.



Blue
Center
Portion

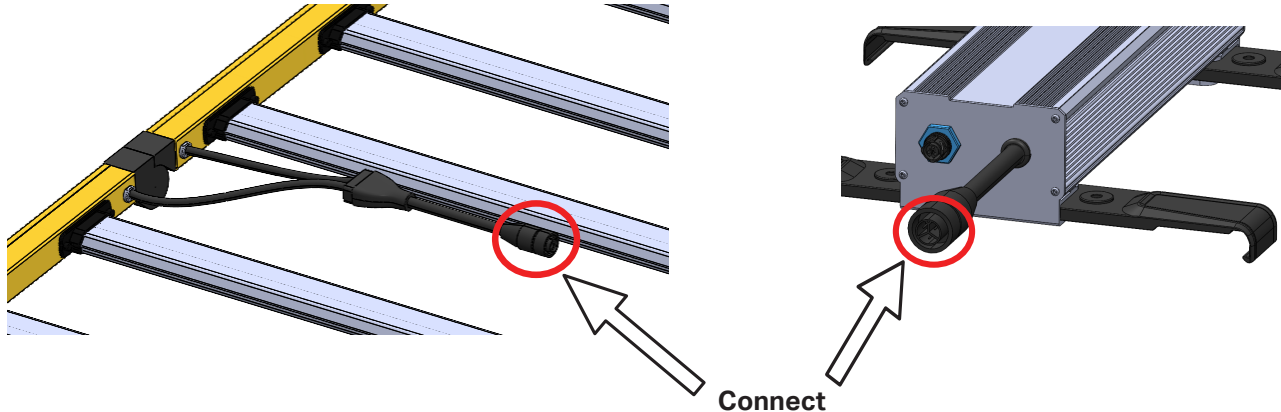
Note: The blue center portion must be turned to disconnect the cables.



The Bridge

The Bridge Installation Manual Light Fixture Assembly Cont.

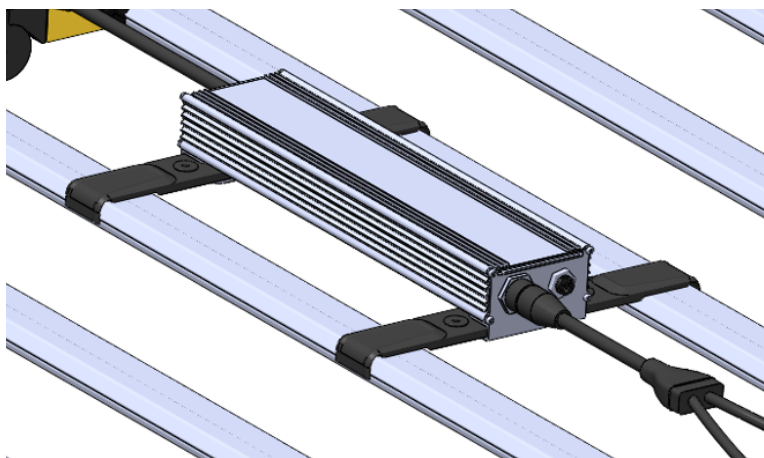
Step 3 (cont.):



Step 4:

Attach the *BIOS Power Supply (PSU)* to the center of the *The Bridge* fixture using the (4) clamps. Ensure you hear a click noise with each clamp assembly, as this will confirm that the *PSU* is fully secured to *The Bridge* fixture.

Note: The *PSU* provides stability to *The Bridge* fixture and also ensures that the fixture remains unfolded.



bios

The Bridge

The Bridge Installation Manual

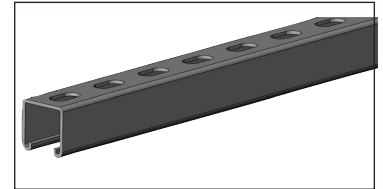
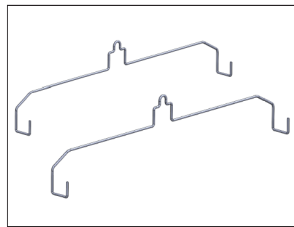
Wide Unistrut Hanger Mounting

The following outlines the steps for mounting The Bridge fixture using the Wide Unistrut Hanger to unistrut in either the channel up or channel down orientation.

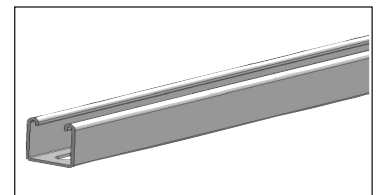
Recommended Hardware

Note: Hardware included

(2) Wide Unistrut Hanger with
SKU: BP-000B-000-BRDG01-1



Unistrut Channel-Side Down

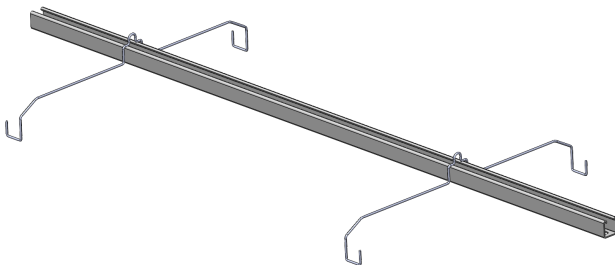


Unistrut Channel-Side Up

Installation Notes

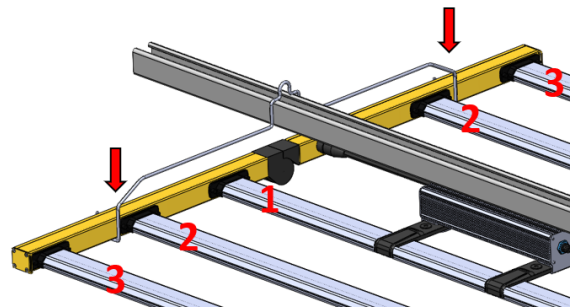
Step 1:

Hang both Unistrut Hangers on the unistrut channel.



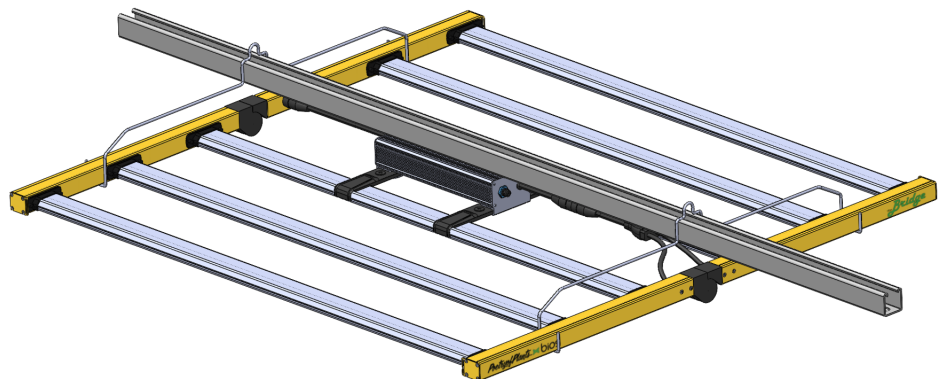
Step 2:

Place one end of fixture into hanger hooks, with hook ends in between 2nd and 3rd LED bars on either side of fixture.



Step 3:

Repeat Step 2 for the other end of the fixture and hanger.

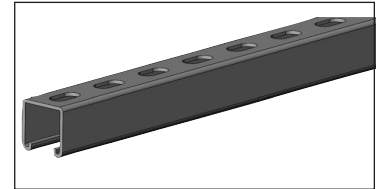
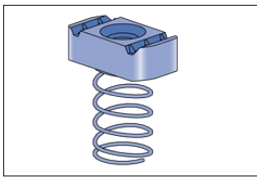


The following outlines the steps for mounting the fixtures using the gripple cable method to unistrut in either the channel up or channel down orientation.

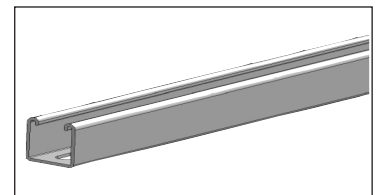
Recommended Hardware

Note: Hardware not included

(2) Strut Channel Nut with Spring (2) Eye Bolt (2) Washer (2) Nut



Unistrut Channel-Side Down

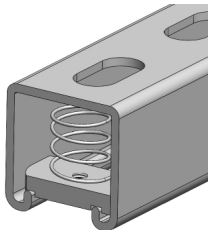


Unistrut Channel-Side Up

Unistrut Channel Down

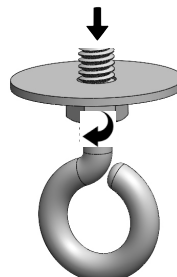
Step 1:

Place the **Strut Channel Nut with Spring** in the Unistrut Channel.



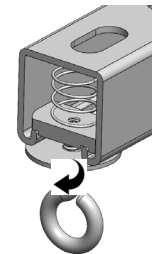
Step 2:

Thread the **Nut** and **Washer** onto the **Eye Bolt**.



Step 3:

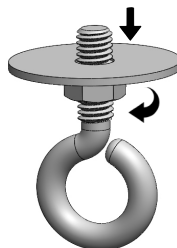
Thread assembly from Step 2 into the **Strut Channel Nut with Spring** from Step 1.



Unistrut Channel Up

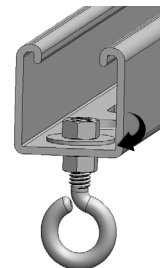
Step 1:

Thread the **Nut** and **Washer** onto the **Eye Bolt**.



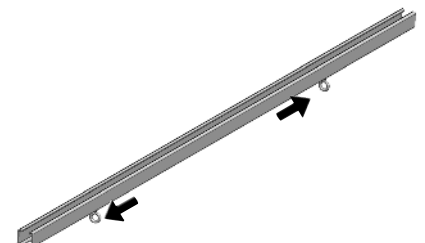
Step 2:

Place the **Eye Bolt assembly** from Step 1 through the Unistrut slot. Then thread another **Washer** and **Nut** on top of the assembly and tighten.



Repeat previous steps for the mounting hardware along the channel so the hardware spacing aligns with the nominal fixture length.

For example: Mounting hardware for a 4ft fixture should be spaced approximately 4ft apart (or less) so that the cable assembly can be suspended from the mounting hardware locations.





The Bridge

The Bridge Installation Manual

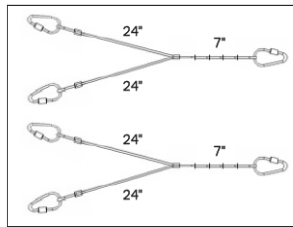
Unistrut - Y-Hanger and Adjustable Nylon Rope Mounting

The following outlines the steps for attaching the Gripple Cables to The Bridge fixture and the best ways to attach those to common mounts. This assembly applies to both unistrut channel-side down and unistrut channel-side up.

Recommended Hardware

Note: Hardware not included

(2) Y-Hanger with Carabiners
SKU: BP-000B-000-YKAB01-1



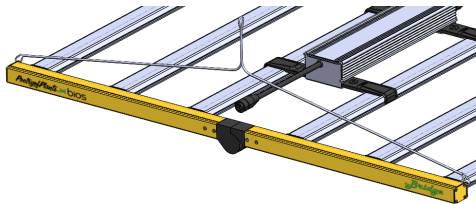
(2) Adjustable Nylon Rope



Installation Notes

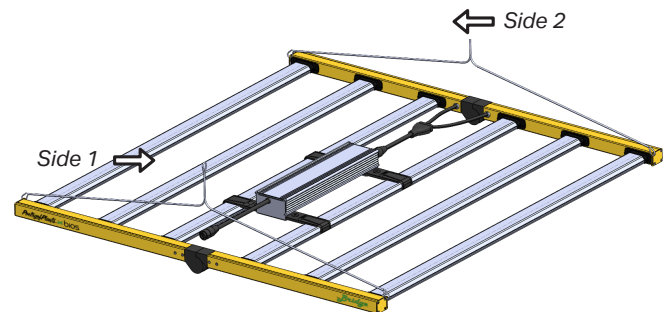
Step 1:

Clip (1) Y-Hanger carabiner onto the Bridge end cap plate holes.



Step 2:

Clip the other set of Y-Hanger carabiners to the other side of the fixture.

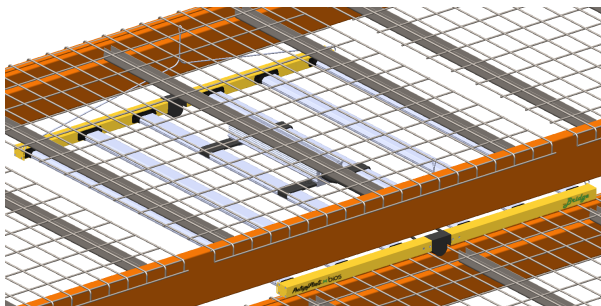


Step 3:

Clip the single end of the cable to the desired mounting location.

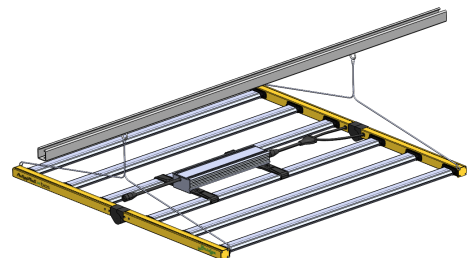
Option 1: Wire Racking

NOTE: Ensure your racking is wide enough to accommodate the entire fixture.

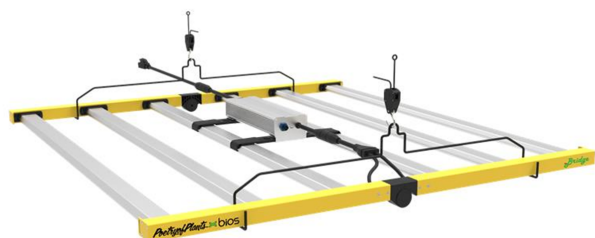


Option 2: Y-Hanger to Unistrut

NOTE: This will require additional hardware and installation steps that can be found on the previous page (pg. 5.)



Option 3: Adjustable Nylon Rope Hanger to Unistrut



AC & DC Power Cable Connections:

Connect DC cable between the PSU and the Fixture.

- Cable coming out of the power supply can be attached to the cable coming out of the fixture (see page 2-3 for details.) Please contact help@bioslighting.com if you need assistance.

Connect AC cable between PSU and Power source.

- If using an AC Pig-Tail Cable, double check that the J-Box is de-energized before beginning the work.
 - The circuit should be off before making any electrical connections.

Note: Please use licensed electrical contractor for this work

- If using a NEMA plug cable, be sure the plug is rated to match your circuit.

Double check all cable connection points to be sure of connectivity.

Fixture Testing/Commissioning:

IMPORTANT:

Once the fixtures are securely hung and the power cables are connected, energize the circuit to test the fixture. The fixtures will illuminate at full brightness. Always be careful with your eyes.

- Note that fixtures are equally bright, no failing diodes, no flickering, and confirm the Thermal Plot for proper light coverage.
- Power off fixtures before making any needed adjustments.

Dimming Option:

It is recommended to make the dimming connection at the power supply after the fixture commissioning is complete. This helps filter potential issues and will make troubleshooting much easier.

- Connect BIOS Analog Dial OR Dimming Pig-Tail cables and optional Dimming Chain Cables (T-Cables & Jumper Cables) per the Dimming Cable Installation Guide on the BIOS Lighting website.
- Once all dimming cables are installed, energize the fixture circuit, and begin the commissioning of the dimming system per the manufactures specifications.